



2013-1

Expenditures

Description	2012-13 Final Budget	2013-14 Adopted Budget	Difference from 2012-13
<p>10000 - GENERAL SUPPORT</p> <p>10000 - GENERAL SUPPORT</p> <p>10000 - GENERAL SUPPORT</p> <p>10000 - GENERAL SUPPORT</p> <p>10000 - GENERAL SUPPORT</p> <p>10000 - GENERAL SUPPORT</p> <p>10000 - GENERAL SUPPORT</p> <p>10000 - GENERAL SUPPORT</p> <p>10000 - GENERAL SUPPORT</p>	<p>4,150,000</p> <p>4,150,000</p> <p>1,550,000</p> <p>1,550,000</p> <p>1,550,000</p> <p>1,550,000</p> <p>1,550,000</p> <p>1,550,000</p> <p>1,550,000</p>	<p>4,150,000</p> <p>4,150,000</p> <p>1,550,000</p> <p>1,550,000</p> <p>1,550,000</p> <p>1,550,000</p> <p>1,550,000</p> <p>1,550,000</p> <p>1,550,000</p>	<p>0</p> <p>0</p> <p>0</p> <p>0</p> <p>0</p> <p>0</p> <p>0</p> <p>0</p> <p>0</p>
Total GENERAL SUPPORT	9,802,549	9,675,534	-127,015
<p>20000 - INSTRUCTION</p> <p>20000 - INSTRUCTION</p> <p>20000 - INSTRUCTION</p> <p>20000 - INSTRUCTION</p> <p>20000 - INSTRUCTION</p> <p>20000 - INSTRUCTION</p> <p>20000 - INSTRUCTION</p> <p>20000 - INSTRUCTION</p>	<p>58,792,419</p> <p>58,792,419</p> <p>58,792,419</p> <p>58,792,419</p> <p>58,792,419</p> <p>58,792,419</p> <p>58,792,419</p> <p>58,792,419</p>	<p>58,792,419</p> <p>58,792,419</p> <p>58,792,419</p> <p>58,792,419</p> <p>58,792,419</p> <p>58,792,419</p> <p>58,792,419</p> <p>58,792,419</p>	<p>0</p> <p>0</p> <p>0</p> <p>0</p> <p>0</p> <p>0</p> <p>0</p> <p>0</p>
Total INSTRUCTION	58,792,419	59,737,776	945,357
<p>30000 - TRANSPORTATION</p> <p>30000 - TRANSPORTATION</p> <p>30000 - TRANSPORTATION</p> <p>30000 - TRANSPORTATION</p> <p>30000 - TRANSPORTATION</p>	<p>5,449,398</p> <p>5,449,398</p> <p>5,449,398</p> <p>5,449,398</p> <p>5,449,398</p>	<p>5,449,398</p> <p>5,449,398</p> <p>5,449,398</p> <p>5,449,398</p> <p>5,449,398</p>	<p>0</p> <p>0</p> <p>0</p> <p>0</p> <p>0</p>
Total TRANSPORTATION	5,449,398	5,477,938	28,540
<p>40000 - COMMUNITY SERVICES (RECREATION)</p> <p>40000 - COMMUNITY SERVICES (RECREATION)</p> <p>40000 - COMMUNITY SERVICES (RECREATION)</p> <p>40000 - COMMUNITY SERVICES (RECREATION)</p> <p>40000 - COMMUNITY SERVICES (RECREATION)</p>	<p>259,738</p> <p>259,738</p> <p>259,738</p> <p>259,738</p> <p>259,738</p>	<p>259,738</p> <p>259,738</p> <p>259,738</p> <p>259,738</p> <p>259,738</p>	<p>0</p> <p>0</p> <p>0</p> <p>0</p> <p>0</p>
Total COMMUNITY SERVICES (RECREATION)	259,738	241,534	-18,204
<p>50000 - UNDISTRIBUTED</p> <p>50000 - UNDISTRIBUTED</p> <p>50000 - UNDISTRIBUTED</p>	<p>31,554,867</p> <p>31,554,867</p> <p>31,554,867</p>	<p>31,554,867</p> <p>31,554,867</p> <p>31,554,867</p>	<p>0</p> <p>0</p> <p>0</p>
Total UNDISTRIBUTED	31,554,867	34,343,902	2,789,035
TOTAL BUDGET	\$105,858,971	\$109,476,684	\$3,617,713
Percent Increase			3.42%

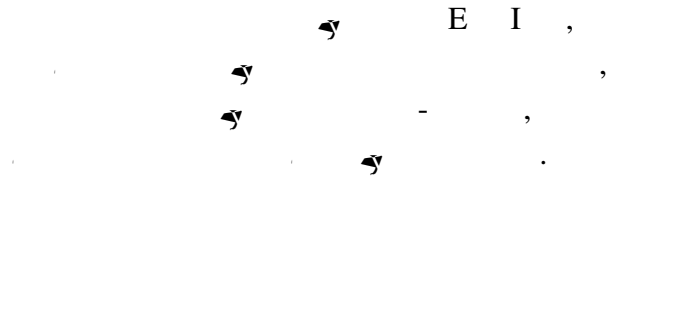
PRESERVED...

Three key programs that, while not mandated by the state, have always helped define the quality of an East Islip education and will continue to do so under this proposed budget:

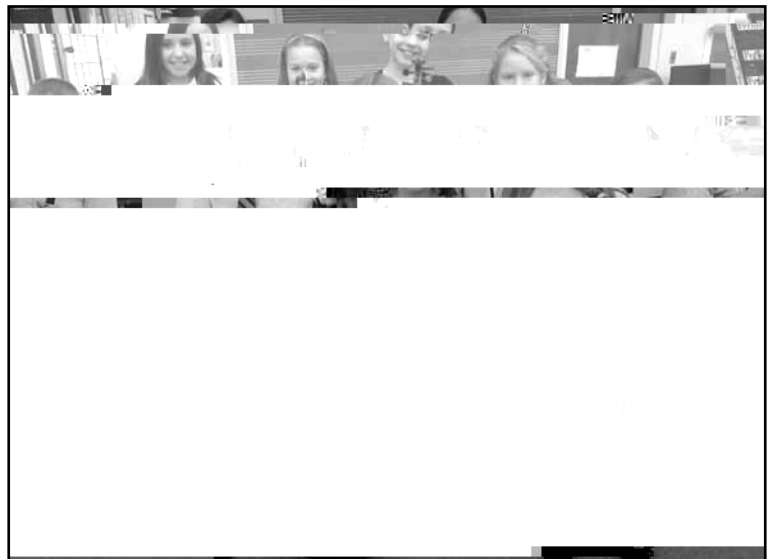
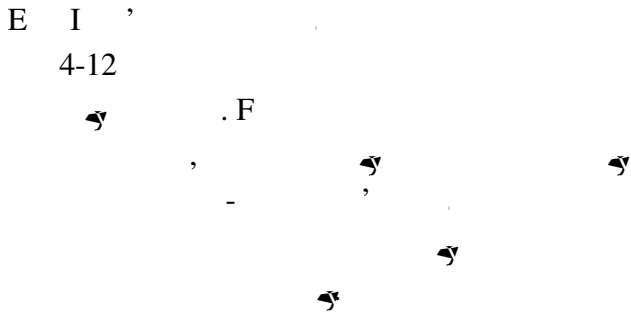


1. ATHLETICS

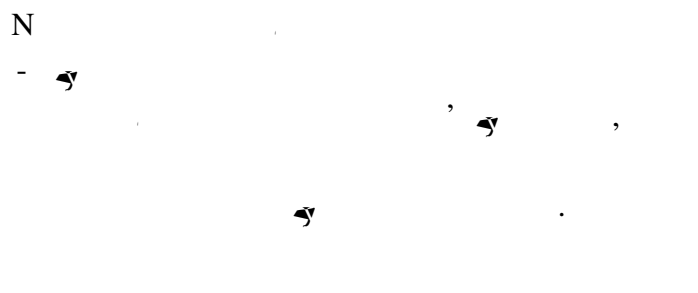
The long and successful history of the Redmen varsity and JV sports program has always brought a



2. MUSIC

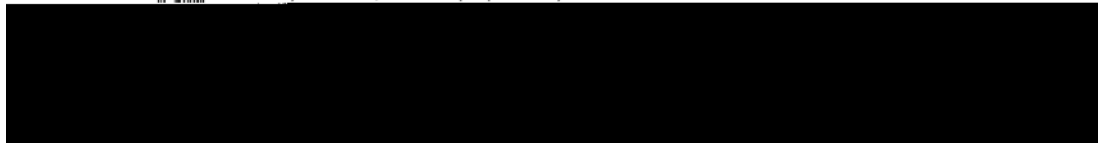


3. KINDERGARTEN



PROPOSITION NO. 3 SECTION NO. 1

the qualified voters present and voting.



	1	2
Trustee	Trustee	Trustee
three-year term	three-year term	three-year term





UÊ..iÊ •>ÃÃÊ œvÊÓä£ÍÊ...>ÃÊLii~Ê œ
 Ì...œÕÃ>~`ÃÊœVÊ•œij•ÊÃÊ.œÊ>ÀÃ
 >~`ÊÃi~^œÀÃÊ...>ÛiÊLii~Ê>VVi«Ìi`
 Vœ•i}iÃÊ>~`ÊÕ~`ÛiÃÃ`ì`iÃjÊ~V•
 >“ijÊ œÃìœ~Ê œ•i}ijÊ6^••>~œÛ>
 œPœ•>jÊ,* jÊ1~`ÛiÃÃ`ìPÊœvÊ,^V

UÊÛiÊÃiÕ`i`iÃÊ~iiÕVÌÃÊ“Ê•i>~Ê«

UÊÊ...ÊÃV...œœ•ÊÃiÕ`i`i>ì...•ìiÊv
 À>ViÊ>ìÊ-Õvvœ•ŽÊ œÕ`ìPÊÃÛ“““
 >~`Êi>À`i•Ê œ~}Ê Ã•>~`Ê...œ~œÀÃ°

UÊÕ`i`iÃÊì...ÀœÕ}...œÕiÊVœiÀÕViÊ
 ÌiÀÛ^ViÊ«Àœ•iViÃÊ>~`Êv...>À`ìPÊ
 vœœ`Ê`À^ÛiÃjÊÛ^Ã`iÃÊìœÊÛiìiÀ>
 vœœ`Ê`À^ÛiÃjÊÛ^Ã`iÃÊìœÊÛiìiÀ>
 vœœ`Ê`À^ÛiÃjÊÛ^Ã`iÃÊìœÊÛiìiÀ>

UÊ“LiÃÊ*œ~`iÊ •i“i`i>ÀPÊ~>“i`ÊœÖä£•QÊ~}ÊvœÀÊV>~ViÀjÊ`>Lii
 >ì^œ~>•Ê •ÕiÊ,^LLœ~Ê-V...œœ•iÊœÃiÊœvÊœ~•PÊ>~`Ê->~`PÊ œ
 ÓÈnÊ~>ì^œ~Û`i°

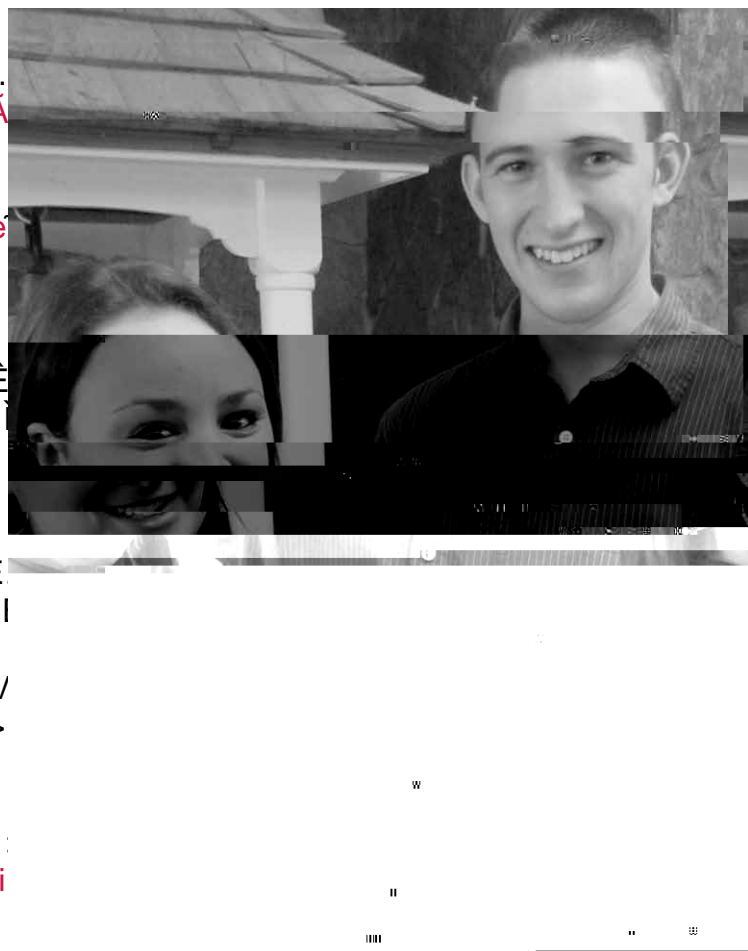
UÊ
(

UÊ
\
s
Ê
UÊ
/
i

UÊ
/

UÊ
(

UÊ



UÊœÕÀÊPœÕ~}ÊÃV^i`i`iÃÊ>ìÊ...^}...ÊÃV...œœ•Ê«ÀiÃi`i`iÊ
 «>«iÃÊ>jÊ Ã•>~`Ê-V`i`ViÊ>~`Ê ~}~iiÃ~}Ê >^À°

AND STUDENTS EXCE

UË...iÉ...^}...ÉÃV...œœ•É>`i`É`V}ÉË.
i>·ì...É/iV...~œ•œ}PÉ >ÀiiÀÉ V>`i`
~Û^Àœ~“i`iÉ Àii~É>`É ~liÀ~>ì`œ~
•œL>·^â>ì`œ~ÉV>ÀiiÀÉ>V>`i`^iÃ°

UË“LiÀÉ*œ^~iÉ>`É >ÀiÉ Ã·^«É ^}...
ÀiVœ}~^âiiÉÉÀÉÀŽÉ-ì>liÉ,iÜ>À`É-V

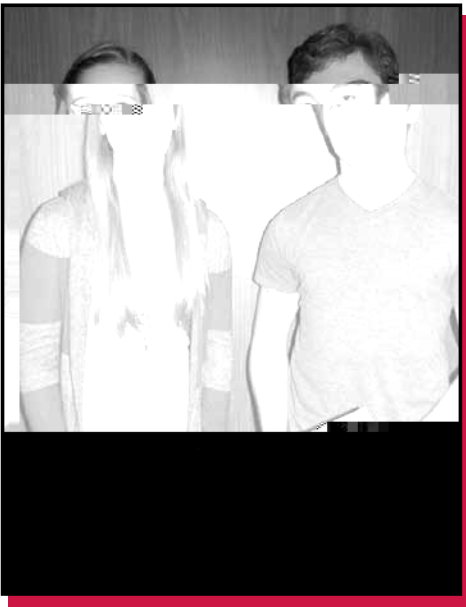
UËÀœÃÃ‡VœÕ~iÀPÉÀÕ~iÀÉv^i>ÃÕ.iiÉ
V...>“^œ~É>`ÉAi·iVli`ÉiœÉ ••‡œ

UËiÉ“^`·iÉÃV...œœ•ÉÃiÕ`i`iÉ>`Éœ
ÀiÕ`i`iÉÜœ~É>iÉ iÜÉ9œÀŽÉ-ì>liÉ
,iv·iVl^œ~ÀÉ>ÀiÀÉVœ~liÀiÉi...ÀiÉ
ÀiÕ`i`iÀÉÜœ~É>iÉ-Övvœ•ŽÉ œÕ`iPÉ·iUi°



Members of East Islip High School's Medical and Health Technology Career Academy.

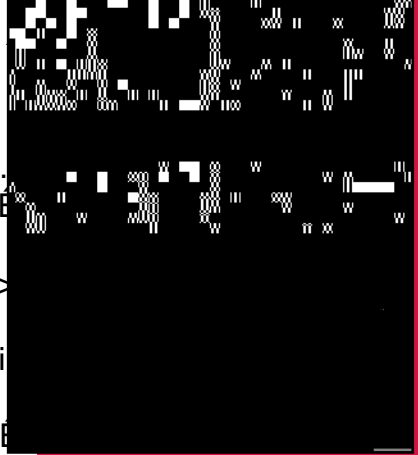
UË}...ÉÃV...œœ•ÉÃiÕ`i`iÀÉÜœ~ÉiÜœÉ° iÃiÉœÉÉ...œÜ}É>Ü>ÀÉÃÉiÀÉi...



National Merit Scholarship Commended Students Julia O'Connor and Peter Zepf.

UËœÉ >ÀiÉ Ã·^«ÉÃi~œÀÃÉ~>“i`É œ““i>ì`É-ìÖÉ
iÀ^iÉ-V...œ•>ÀÃ...^«É*Àœ}À>“]É«>V^}Éi...i`É
~>ì`œ~Û^iÉœÕiÉœvÉ“œÀiÉi...>`É£°xÉ“^•^œ~É

UËiÉ...^}...ÉÃV...œœ•É“Ö·A‡V>ÀiÉA~VÉÀiVÜa}É`i`œ~É
>ÀiiÀ~É ^Û^Àœ~É œ~viÀi~viÆÉiÜœÉ...^}...É
ÃV...œœ•ÉÃiÕ`i`iÀÉ>`Éœ~iÉ“^`·iÉÃV...œœ•É
ÀiÕ`i`iÉ~>··Éi>liÉ“ÖÃ^V
>iÉ 9-- É7~liÀÉ œ~viÀi~
ÀiÕ`i`iÀÉV...œAi`ÉvœÀÉ
-V...œœ·ÉœÕ`iPÉ ÖÃ^VÉ i
vœÖÀi...‡}À>`iÉ“ÖÃ^VÉÃi
iœÉÀi«ÀiAi`iÉ >ÀiÉ Ã·^«É
* É iÃi^Û>·ÆÉÃiÕ`i`iÀÉ
œvÉ >ÀiÉ Ã·^«½ÃÉÃ^YÉÃ
iœÉ«iÀvœÀ“É~É- É^Û
«iÀvœÀ“^}Éi~Ãi“L·iÃ°É



President's Volunteer Service Award winner Victoria Goldfader of EIMS.

